

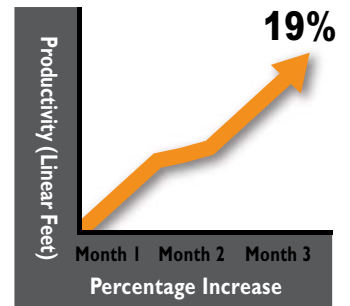
# Actionable insight begins with truthful data.

## Shoplogix delivers both. In days, not years.

Shoplogix is the proven world leader in the rapid time to value delivery of real-time performance management solutions that increase manufacturing profitability. The Shoplogix Plantnode Performance Suite provides sustainable results through role-based intelligence, linking operational effectiveness and strategic decision-making. Plantnode connects to any machine or line, automating the collection of plant floor data, replacing the need for unreliable manually recorded production data. This accurate, timely and unbiased machine truth™ yields immediate actionable insights with typical ROI payback in just 3 to 6 months. Shoplogix solutions form the foundation for continuous improvement by providing manufacturers with the tools to remove operational inefficiencies, driving growth and profitability.

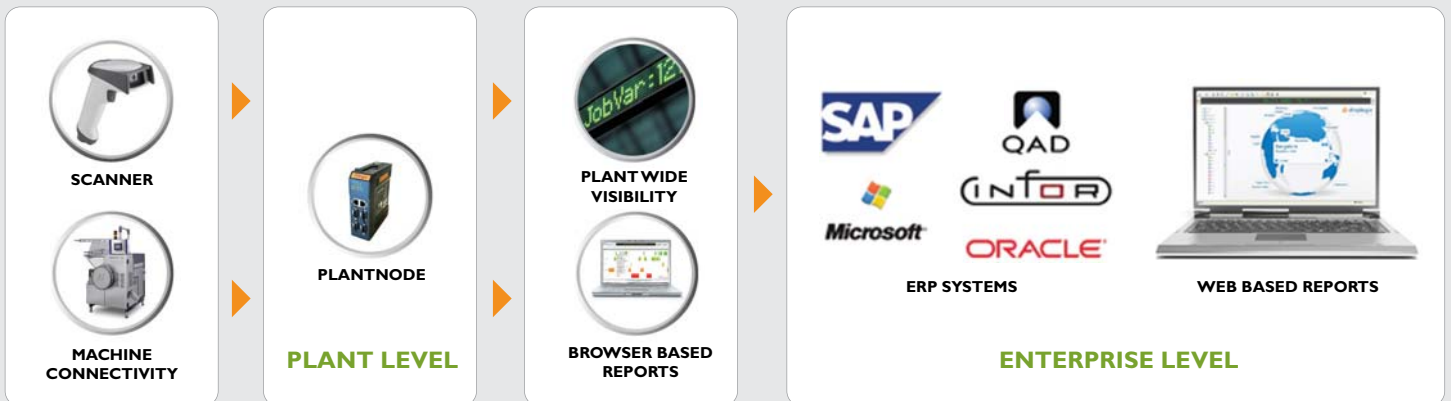


**3-6**  
payback MONTHS



## The Plantnode Solution

The patented Plantnode solution combines intelligent software and integrated hardware which has a unique ability to connect directly to any PLC or non-PLC based machine. Immediate feedback to operators on the floor through actionable messaging ensures that continuous improvement programs are sustained over time and have maximum impact on margins and efficiency.



# Plantnode Enterprise

For manufacturers with **multiple plants** and single-plant manufacturers who have the need to **consolidate plant data**, providing visibility into all plants and lines of business in a standardised and scalable way.

## Data Collection and Aggregation

Roll up or drill down data by machine type, individual plant, functional area, geographical region or view corporate-wide. The Plantnode Enterprise tree structure makes it easy to view performance data in the way that makes most sense for your organisation.



Running 21hrs

shoplogix

Make Ready 1.5hrs

shoplogix

Job Var. \$500

shoplogix

Setup 40min

shoplogix

Shift Prod 2705

shoplogix

## Employee Engagement

LED displays on the plant floor in plain view of the operator display the current operating mode and the variance between the target and actual performance. The visibility of this real-time stream has an immediate impact on operator performance, enabling operators to make immediate decisions that directly impact profitability on the job they're running.

Contact our Manufacturing and Operations specialists at [internationalsales@shoplogix.com](mailto:internationalsales@shoplogix.com)

UK Office: +44 (0)1452 883900 | [www.shoplogix.com](http://www.shoplogix.com)

© 2010 Shoplogix Inc. All rights reserved.

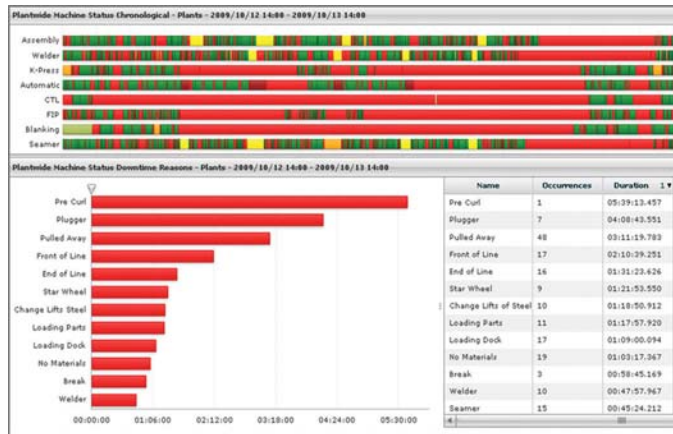
All trademarks and brands are property of their respective holders.

 **shoplogix**<sup>TM</sup>  
O U T P E R F O R M



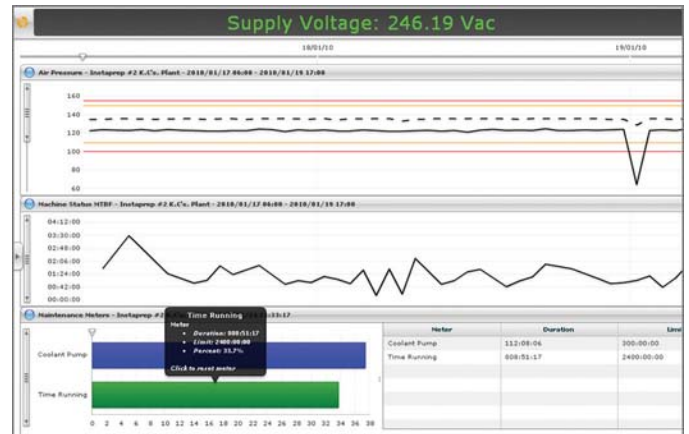
# Data Analysis Reports

## Line Analysis: Top Downtimes



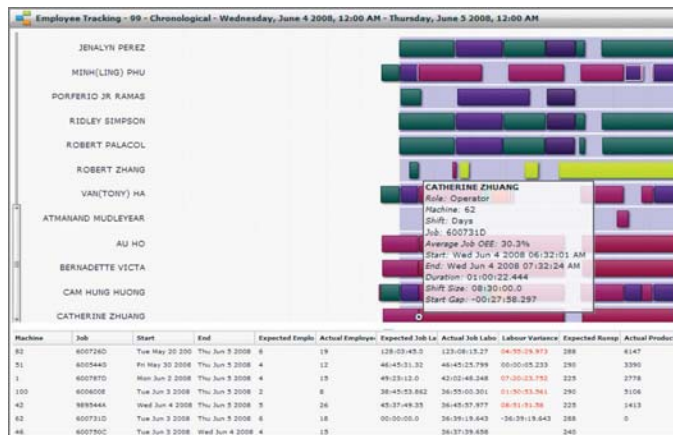
Line analysis allows for identification of bottlenecks within a line or within the job flow of the facility.

## Alarms, Preventative Maintenance Meter



Plantnode can track any variable that changes over time, setting limits for an upper and lower condition. If a condition is exceeded, Plantnode can send a series of escalating alarms to the display board or alerts to key people.

## Labour Analysis



Operators scan into the machine they are assigned allowing management to measure and understand expected versus actual labour deployment on a job by job basis.

## Enterprise-wide Dashboards



Operational goals and performance metrics are displayed using easy to read gauges and graphs. Information can be rolled up by department, plant etc, creating a custom dashboard at the click of a button.