

# ELECTRONIC LOGBOOK SOLUTIONS

**SECURE. ACCESSIBLE. INDISPENSABLE.**



**eLogger**

# ELOGGER - RECORD IT RIGHT.

**eLogger™** electronic logbook software replaces paper log books and disconnected systems – collecting, storing, and distributing real-time data about your operations to those who need to know.

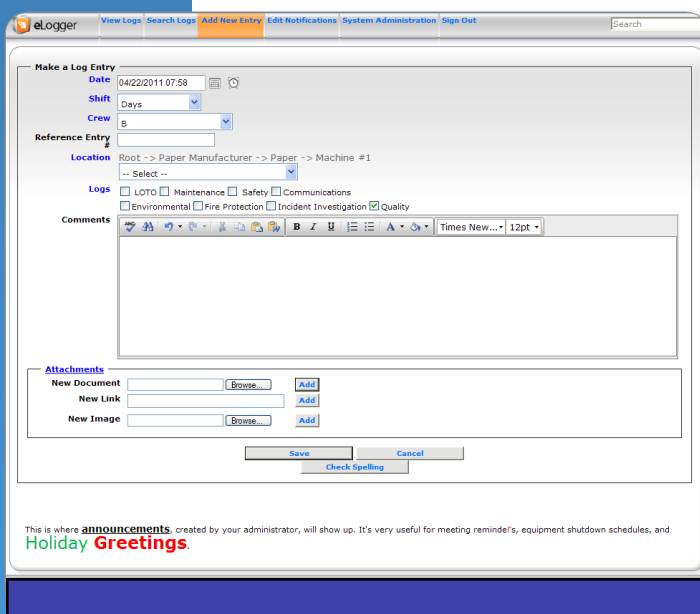
In use by more than 50 facilities worldwide and by some of the biggest names in business, **eLogger** contributes to the safety, compliance, efficiency, and best-business practices of organizations in dozens of industries.

## Increase Accountability

With a paper logbook, you have no way of knowing for certain who wrote a log entry, who edited it, and who read it. **eLogger** increases accountability in your organization by controlling read/write access by user, issuing date and time stamps to entries, and optionally locking completed entries.

## Improve Accuracy

Handwritten logs are typically fraught with spelling errors, illegible notes, incomplete information, and often a few rips, tears, and smudges. **eLogger** standardizes log entries, performs spell checking, and guarantees critical fields are completed.



The screenshot shows the 'Make a Log Entry' form in the eLogger application. The form includes the following fields and options:

- Date:** 04/22/2011 07:58
- Shift:** Days
- Crew:** B
- Reference Entry:** (empty)
- Location:** Root -> Paper Manufacturer -> Paper -> Machine #1
- Logs:** LOTO  Maintenance  Safety  Communications  Environmental  Fire Protection  Incident Investigation  Quality
- Comments:** A rich text editor with a toolbar and a text area.
- Attachments:** Fields for 'New Document', 'New Link', and 'New Image', each with a 'Browse...' button and an 'Add' button.
- Buttons:** 'Save', 'Cancel', and 'Check Spelling'.

At the bottom of the form, there is a note: "This is where announcements, created by your administrator, will show up. It's very useful for meeting reminders, equipment shutdown schedules, and Holiday Greetings."

## Ensure Compliance

Many organizations are compelled to maintain written logs and make the logs available to management or regulatory agencies such as NERC. With date/time stamping, clear audit trails, searchable entries, and flexible reporting, **eLogger** is the ideal way to comply with industry requirements.

## Operate Proactively

As critical conditions are identified in **eLogger**, email notifications may be sent to management, security, or other individuals to ensure the proper action is taken. Assign different colors or icons to various log categories to identify quickly the conditions you care about.

The Log Entry screen is intuitive and quick to complete. Multiple documents, images, and URLs can be associated with any entry.

# KEEP IT SECURE. MAKE IT ACCESSIBLE.

## Improve Communications

By centralizing your logbook data in **eLogger**, you make it available to those who need it, whether they are in the upstairs office, or across the country. Have important information to share with the team? **eLogger** is an ideal medium for disseminating important information or announcements, ensuring your team remains informed.

## Drive Efficiency

Maintaining paper logbooks demands ever increasing overhead. File storage systems and manual data retrieval are inefficient and often ineffective. **eLogger** eliminates paper logbooks, storing both vital and routine data in a highly accessible, yet secure database.

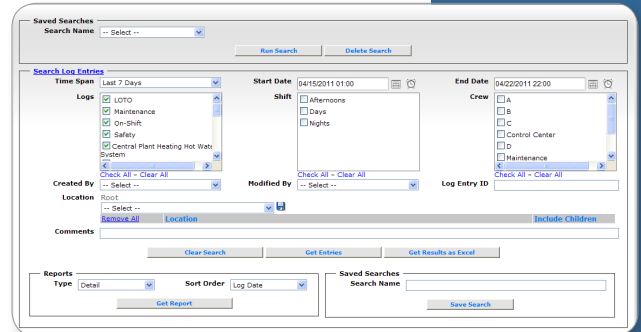
## Enhance Productivity

Time spent hunting for a paper logbook, or pouring through log entries for an important piece of information is counterproductive.

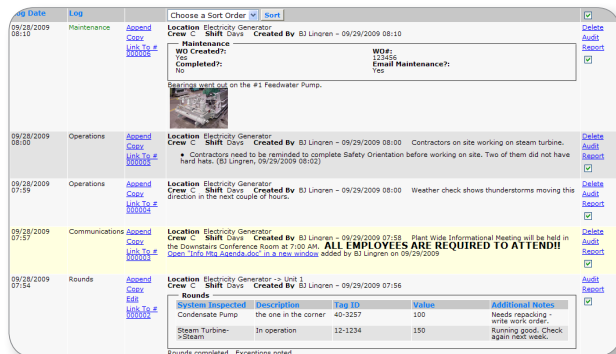
**eLogger** is available to authorized users anywhere, anytime, and comprehensive search options let you drill down to the salient data immediately.

## Easy Data Access

**eLogger** uses an industry-standard Microsoft SQL Server database. Use the standard reports included, utilize your favorite reporting tool, or export the data to a spreadsheet to quickly and easily obtain the data you require.



Comprehensive search functionality ensures you can find the information you need quickly and easily.



Log Date	Log	Choose a Sort Order	Sort																
09/28/2009 06:10	Maintenance	Append Color	Location: Electricity Generator Crew: C Shift: Days Created By: BJ Lininen - 09/29/2009 08:10	Delete Audit Report															
<b>Maintenance</b> WFO Created?: Yes Completed?: No WFO: 13349 Event Maintenance?: Yes Photos were shot on the #1 Feedwater Pump.																			
09/28/2009 06:52	Operations	Append Color	Location: Electricity Generator Crew: C Shift: Days Created By: BJ Lininen - 09/29/2009 08:00	Delete Audit Report															
Contractors on site working on steam turbine. Contractors need to be reminded to complete Safety Orientation before working on site. Two of them did not have hard hats. (BJ Lininen, 09/28/2009 08:02)																			
09/28/2009 07:59	Operations	Append Color	Location: Electricity Generator Crew: C Shift: Days Created By: BJ Lininen - 09/29/2009 08:00	Delete Audit Report															
Weather check shows thunderstorms moving this direction in the next couple of hours.																			
09/28/2009 07:57	Communications	Append Color	Location: Electricity Generator Crew: C Shift: Days Created By: BJ Lininen - 09/29/2009 07:58	Delete Audit Report															
Plant Wide Informational Meeting will be held in the Downstairs Conference Room at 7:00 AM. <b>ALL EMPLOYEES ARE REQUIRED TO ATTEND!!</b> Docs: <a href="#">Title 191 Safety.doc</a> , <a href="#">Job Safety Analysis</a> posted by: BJ Lininen on 09/28/2009																			
09/28/2009 07:54	Rounds	Append Color Edit	Location: Electricity Generator - Unit 1 Crew: C Shift: Days Created By: BJ Lininen - 09/29/2009 07:56	Delete Audit Report															
<table border="1"><thead><tr><th>System Inspected</th><th>Description</th><th>Tag ID</th><th>Value</th><th>Additional Notes</th></tr></thead><tbody><tr><td>Condensate Pump</td><td>the one in the corner</td><td>40-3257</td><td>100</td><td>Needs replacing - write work order.</td></tr><tr><td>Steam Turbine-3/Steam</td><td>In operation</td><td>12-1234</td><td>150</td><td>Running good. Check again next week.</td></tr></tbody></table> Rounds completed. Exceptions noted.					System Inspected	Description	Tag ID	Value	Additional Notes	Condensate Pump	the one in the corner	40-3257	100	Needs replacing - write work order.	Steam Turbine-3/Steam	In operation	12-1234	150	Running good. Check again next week.
System Inspected	Description	Tag ID	Value	Additional Notes															
Condensate Pump	the one in the corner	40-3257	100	Needs replacing - write work order.															
Steam Turbine-3/Steam	In operation	12-1234	150	Running good. Check again next week.															

## Bring It Together

**eLogger's** industry-standard database makes it easy to import data from related systems, such as a data historian or maintenance management application. Displaying this related, complimentary data in a single application reduces keystrokes and ensures vital information gets noticed.

View history in an efficient grid format. Sort the list, append to an entry, or generate reports directly from the listing.

## Feature and Benefits

Easy to use	User-friendly interface is simple to use, even for inexperienced operators.
Security controls	For each location and log defined, administrators can assign user privileges to view, append, add new, edit, or delete log entries. Enforce time limits on edits and make specific fields read-only.
Multi-location, multi-level support	Define a location hierarchy that matches your facility. <b>eLogger</b> supports an unlimited number of locations and an unlimited number of levels within those locations.
Spell check and formatting flexibility	Eliminate misspellings, highlight important notes with color, larger font, or underscoring.
Attach files to log entries	Easily share important information by attaching text documents, spreadsheets, CAD drawings, image files, or URLs to log entries.
Copy existing entries	Copy existing entries, including the attached files and images, and only change the necessary fields.
Email escalations	Configure <b>eLogger</b> to Email specified personnel based on pre-defined conditions or events.
Custom data entry pages	Build custom data entry pages to collect and manage the data that is important to your organization. Set default values for the fields you create and make them mandatory or searchable.
Ensure data consistency	Limit user selections to drop-down fields or multiple-select lists of items. Point and click ensures accuracy.
Comprehensive search tool	Find the data you need quickly. Filter log entries by location, log category, date, and more. Quick search option scans all searchable data.
Important reminders	Let <b>eLogger</b> remind you when certain tasks need to be completed. As frequently as every minute or once a year, <b>eLogger</b> ensures you get the job done.
Detailed audit trail	If you allow your users to edit, <b>eLogger's</b> powerful audit feature tracks who changed it, what they changed, when they changed it, and what the previous value was.
Import external data	Import information from PI or other process historians, maintenance management systems and enterprise systems and easily view it in <b>eLogger</b> .
Powerful reporting	Summary and detail reports are included. <b>eLogger</b> data is stored in a SQL database so you can write your own custom reports with the report writer of your choice or export the data you specify into an Excel spreadsheet.

## Industry Solutions

As a testament to its flexibility and configurability, eLogger is in use by organizations in dozens of industries, including:

- Oil and Gas
- Public/Private Utilities
- Paper/Pulp Processing
- Event Security
- Petrochemical
- Facility Management
- Refining
- Laboratories
- Manufacturing
- Medical

The screenshot displays a complex data entry form for logging fire incidents. It includes sections for:

- On-Shift:** A note that employees must create a log entry at the start of their shift, with fields for 'Foreman' and 'Employee' (a list of names like Aladdin, Bambi, Donald Duck, etc.).
- Contractors:** Fields for 'Company Name', 'Training Date', and 'Contractor Name'.
- Additional Information:** A 'Generator' dropdown menu and a 'Derating Info' field.
- Fire Protection:** A 'Building Status' dropdown, a 'Detector Type' list (None Present, Present, Undetermined, Heat, Smoke), and a 'Failure Reason' list (Power failure, Improper install, Defective, Lack of Maint/Cleaning, Human error).
- Detector Effectiveness:** Radio buttons for 'Fire too Small', 'Operated', 'Failed to Operate', and 'Undetermined'.
- Ignition Cause:** A dropdown menu.
- Scheduled Tasks:** A table with columns for 'Task', 'Assigned To', 'Date Sched.', 'Time Sched.', 'Date Completed', and 'Status'.

Templates help administrators quickly build data entry screens to gather the needed data.

## Technical Requirements

### Web Application Server Requirements:

- Windows Server 2003 or 2008
- IIS 6 or 7
- Microsoft .Net Framework 2.0, registered with IIS
- 2 GB RAM
- 30GB Disk Space (varies based on application usage)
- 2.0GHz CPU
- Microsoft Data Access Components (MDAC) 2.6

### Database Server Requirements:

- Microsoft SQL Server 2005 or 2008
- Windows Server 2003 or 2008
- 2 GB RAM
- 30GB Disk Space (varies based on application usage)
- 2.0GHz CPU

**Note:** The same server may be used for both.

### Client Machine:

- Web browser (IE 6 or newer, or the newest version of iPad/iPhone, Firefox, Chrome, Safari)
- 1024 x 768 screen resolution (not necessary on mobile devices)

### Other Resources:

- SMTP Server (required for email notifications)





# Search

**Search Log Entries**

**Time Span** Last 7 Days | 
 **Start Date** 04/15/2011 01:00 | 
 **End Date** 04/22/2011 22:00

**Logs**
 LOTO
  Maintenance
  On-Shift
  Safety
  Central Plant Heating Hot Water System

**Shift**
 Afternoons
  Days
  Nights

**Crew**
 A
  B
  C
  Control Center
  D
  Maintenance

**Created By** -- Select -- | 
 **Modified By** -- Select -- | 
 **Log Entry ID**

**Location** Root | -- Select --


**Comments**

**Reports** Type: Detail | Sort Order: Log Date |

**Saved Searches** Search Name: |

Comprehensive search functionality ensures you can find the information you need quickly and easily.

# History

Log Date	Log	Append	Copy	Link To #	Choose a Sort Order	Sort																	
09/28/2009 08:10	Maintenance	<a href="#">Append</a>	<a href="#">Copy</a>	<a href="#">Link To # 000006</a>			Location Electricity Generator Crew C Shift Days Created By BJ Lingren - 09/29/2009 08:10 <b>Maintenance</b> WO Created?: Yes Completed?: No WO#: 123456 Email Maintenance?: Yes Bearings went out on the #1 Feedwater Pump. 	<a href="#">Delete</a> <a href="#">Audit</a> <a href="#">Report</a>															
09/28/2009 08:00	Operations	<a href="#">Append</a>	<a href="#">Copy</a>	<a href="#">Link To # 000005</a>			Location Electricity Generator Crew C Shift Days Created By BJ Lingren - 09/29/2009 08:00 Contractors on site working on steam turbine. Contractors need to be reminded to complete Safety Orientation before working on site. Two of them did not have hard hats. (BJ Lingren, 09/29/2009 08:02)	<a href="#">Delete</a> <a href="#">Audit</a> <a href="#">Report</a>															
09/28/2009 07:59	Operations	<a href="#">Append</a>	<a href="#">Copy</a>	<a href="#">Link To # 000004</a>			Location Electricity Generator Crew C Shift Days Created By BJ Lingren - 09/29/2009 08:00 Weather check shows thunderstorms moving this direction in the next couple of hours.	<a href="#">Delete</a> <a href="#">Audit</a> <a href="#">Report</a>															
09/28/2009 07:57	Communications	<a href="#">Append</a>	<a href="#">Copy</a>	<a href="#">Link To # 000003</a>			Location Electricity Generator Crew C Shift Days Created By BJ Lingren - 09/29/2009 07:58 Plant Wide Informational Meeting will be held in the Downstairs Conference Room at 7:00 AM. <b>ALL EMPLOYEES ARE REQUIRED TO ATTEND!!</b> <a href="#">Open "Info Mtg Agenda.doc" in a new window</a> added by BJ Lingren on 09/29/2009	<a href="#">Delete</a> <a href="#">Audit</a> <a href="#">Report</a>															
09/28/2009 07:54	Rounds	<a href="#">Append</a>	<a href="#">Copy</a>	<a href="#">Link To # 000002</a>			Location Electricity Generator -> Unit 1 Crew C Shift Days Created By BJ Lingren - 09/29/2009 07:56 <b>Rounds</b> <table border="1"> <thead> <tr> <th>System Inspected</th> <th>Description</th> <th>Tag ID</th> <th>Value</th> <th>Additional Notes</th> </tr> </thead> <tbody> <tr> <td>Condensate Pump</td> <td>the one in the corner</td> <td>40-3257</td> <td>100</td> <td>Needs repacking - write work order.</td> </tr> <tr> <td>Steam Turbine-&gt;Steam</td> <td>In operation</td> <td>12-1234</td> <td>150</td> <td>Running good. Check again next week.</td> </tr> </tbody> </table> Rounds completed. Exceptions noted.	System Inspected	Description	Tag ID	Value	Additional Notes	Condensate Pump	the one in the corner	40-3257	100	Needs repacking - write work order.	Steam Turbine->Steam	In operation	12-1234	150	Running good. Check again next week.	<a href="#">Audit</a> <a href="#">Report</a>
System Inspected	Description	Tag ID	Value	Additional Notes																			
Condensate Pump	the one in the corner	40-3257	100	Needs repacking - write work order.																			
Steam Turbine->Steam	In operation	12-1234	150	Running good. Check again next week.																			

View history in an efficient grid format. Sort the list, append to an entry, or generate reports directly from the listing.

## Custom Fields

**Edit Field**

<b>Prompt</b>	<input type="text" value="#1 AGC Status On/Off"/>
<b>Description</b>	<input type="text" value="#1 AGC Status On/Off"/>
<b>Category</b>	Demo <input type="button" value="v"/>
<b>Field Type</b>	Dropdown List <input type="button" value="v"/>
<b>List</b>	On/Off <input type="button" value="v"/>
<b>Mandatory</b>	No <input type="button" value="v"/>
<b>Enabled</b>	Yes <input type="button" value="v"/>
<b>Searchable</b>	No <input type="button" value="v"/>
<b>Default</b>	On <input type="button" value="v"/>

Create and define custom fields to capture the data that is important to your organization.

# Templates

**On-Shift**  
Employees are required to create a log entry at the start of every shift they work.

**Foreman** -- Select --

**Employee**

- Aladdin
- Bambi
- Donald Duck
- Goofy
- Mickey Mouse

Check All - Clear All

**Contractors**

**Company Name** -- Select --

**Contractor Name** \_\_\_\_\_

**Training Date** 04/22/2011

**Additional Information**

**Generator** \_\_\_\_\_

**Generator Dropdown List** -- Select --

**Derate to** \_\_\_\_\_

**Derating Info** \_\_\_\_\_

**Fire Protection**

**Building Status** -- Select --

**Detector Type**

- None Present
- Present
- Undertermined
- Heat
- Smoke

Check All - Clear All

**Failure Reason**

- Power Failure
- Improper Install
- Defective
- Lack of Maint/Cleaning
- Battery Missing

Check All - Clear All

**Ignition Cause** -- Select --

**Detector Effectiveness** -- Select --

**Detector Operation**

- Fire too Small
- Operated
- Failed to Operate
- Undertermined

**Fire Spread** -- Select --

**Scheduled Tasks**

Add	Task	Assigned To	Date Sched.	Time Sched.	Date Completed	Save
<a href="#">Cancel</a>	_____	_____	_____	_____	_____	<a href="#">Save</a>

Templates help administrators quickly build data entry screens to gather the needed data.

# eBEST

eBEST is an innovative technology company dedicated to developing solutions that address real-world business challenges in inventive, flexible ways.

The company's flagship eLogger electronic logbook solution replaces paper logbooks and disconnected systems - collecting and distributing real-time data about your operations to those who need to know. Learn more at [www.ebestuae.ae](http://www.ebestuae.ae) or call (+9714) 326-2227

**eBusiness & Engineering Solution Technologies**  
**eBest Software Development & IT Solutions FZE**  
Suntech Tower, Office No. 808, Dubai Silicon Oasis  
Dubai / United Arab Emirates  
P.O.Box: 341106  
Tel: (+9714) 326-2227  
Mob: (+97150) 1011-986  
Fax: (+9714) 326-3927  
[www.ebestuae.ae](http://www.ebestuae.ae)  
[sales@ebestuae.ae](mailto:sales@ebestuae.ae)